



KRUPANIDHI COLLEGE OF PHARMACY

(Approved by AICTE & PCI, New Delhi, Affiliated to RGUHS, Bengaluru)
Accredited with Grade 'A' by NAAC, Bengaluru | ISO 9001 - 2015 Certified
12/1, CHIKKA BELLANDUR, CARMELARAM POST, VARTHUR HOBLI, BANGALORE - 560 035



5.1.3 Capacity building and skills enhancement initiatives taken by the institution

ICT/computing skills

SI No	Name of the Document	Link to Document
1	JMP Software Program- Formulation Development	Click Here
2	R Studio software-Biostatistics	Click Here
3	Ex-Pharma Series software	Click Here

For the Year

2018-2019



KRUPANIDHI COLLEGE OF PHARMACY

RECOGNISED BY GOVT OF KARNATAKA | APPROVED BY PHARMACY COUNCIL OF INDIA |
AICTE, NEW DELHI AND AFFILIATED TO RAJIV GANDHI UNIVERSITY OF HEALTH SCIENCES
| AN ISO 9001:2015 CERTIFIED INSTITUTION NAAC 'A' GRADE ACCREDITED

#12/1, CHIKKABELANDHUR, CARMELARAM POST, BANGALORE-560 035

*JMP software program
-Formulation Development*

30/7/2018

to

1/6/2019



PRINCIPAL 31/07/18
Krupanidhi College of Pharmacy
Chikkabellandur, Carmelaram Post,
Varthur Hobli, Bangalore - 560 035



KRUPANIDHI COLLEGE OF PHARMACY
AICTE, PCI, RGUHS approved, NAAC "A" and ISO certified



DATE: 27.07.2018

CIRCULAR

This is to inform all the B Pharm, M Pharm, Pharm D students that, the college is organizing the **JMP Software Programm-Formulation Development** training program from 30.07.2018 to 01.06.2019. All the interested students can attend the program.

Principal




PRINCIPAL
Krupanidhi College of Pharmacy
Chikkabellandür, Carmelaram Post,
Varthur Hobli, Bangalore - 560 035



KRUPANIDHI COLLEGE OF PHARMACY

AICTE, PCI, RGUHS approved, NAAC "A" and ISO certified



M Pharm, Dept. of Quality Assurance, 2018-19

JMP (statistical software)

- ❖ JMP (pronounced "jump") is a suite of computer program for statistical analysis developed by the JMP business unit of SAS Institute.
- ❖ At Krupanidhi College of Pharmacy, we extensively use **JMP® 13.2.1 software (Academic license from SAS, SAS Institute, Cary, NC, USA)**. for performing statistical analysis of data generated through students' academic projects.

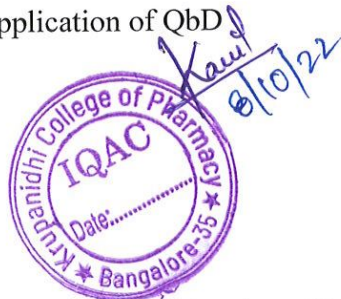
Beneficiaries of the Software:

I and II M Pharm students (Dept. of Quality Assurance) undertaking academic projects are the primary beneficiaries of the tool. The software is also used to provide hands on training for IV B Pharm students on application of software in product development.

Syllabus/Content of the Program (M Pharm- I and II SEM, QA Dept.)

Practical's- 8 hrs/week

1. Case study - Total Quality Management
2. Case study - Six Sigma
3. Case study Deviations,
4. Case study - Out of Specifications (OOS)
5. Case study - Out of Trend (OOT)
6. Case study - Corrective & Preventive Actions (CAPA)
7. Case study - Deviations
8. Case study -Development of Stability study protocol
9. Case study- Estimation of process capability
10. Case study -Application of QbD



PRINCIPAL
Krupanidhi College of Pharmacy
Chikkabellandur, Carmelaram Post,
Arthur Hobli, Bangalore - 560 035

Students List with Project undertaken by the utilization of JMP software:



KRUPANIDHI COLLEGE OF PHARMACY

AICTE, PCI, RGUHS approved, NAAC "A" and ISO certified



SI. NO	STUDENT NAME	PROJECT TITLE	GUIDE NAME
1	Ranjith R		Chandramouli R

First SEM Students List

Sl. No	Student
1.	Kavya JP
2.	Samatha P
3.	Gowthami
4.	Pooja C
5.	Sai Teja Kandimalla
6.	Lokeshwari N
7.	Manushree V
8.	Murali R
9.	Vinutha K

Activities performed using JMP:

❖ Pharmaceutical formulation development:

- ✓ Representing the risk involved in the product development- Inshikawa diagram.
- ✓ Statistical Design of experiment.
- ✓ DoE Evaluation/Model Fit.
- ✓ Validation of the selected design.
- ✓ Optimized formulation development.

Software Utilization in Krupanidhi College of Pharmacy:

JMP has been used extensively in Krupanidhi College of Pharmacy for M PHARM student project purpose:

1. Total projects involving JMP : 01
2. Total students utilized JMP for academic practical's : 09



8/10/22
PRINCIPAL
Krupanidhi College of Pharmacy
Chikkabellandur, Carmelaram Post,
Marthur Hobli, Bangalore - 560 035



KRUPANIDHI COLLEGE OF PHARMACY

RECOGNISED BY GOVT OF KARNATAKA | APPROVED BY PHARMACY COUNCIL OF INDIA |
AICTE, NEW DELHI AND AFFILIATED TO RAJIV GANDHI UNIVERSITY OF HEALTH SCIENCES
| AN ISO 9001:2015 CERTIFIED INSTITUTION NAAC 'A' GRADE ACCREDITED

#12/1, CHIKKABELANDHUR, CARMELARAM POST, BANGALORE-560 035

R studio software

-biostatistics

30/7/2018

to

1/6/2019



Principals
PRINCIPAL
Krupanidhi College of Pharmacy
Chikkabellandur, Carmelaram Post,
Varthur Hobli, Bangalore - 560 035



KRUPANIDHI COLLEGE OF PHARMACY
AICTE, PCI, RGUHS approved, NAAC "A" and ISO certified




DATE: 27.07.2018

CIRCULAR

This is to inform all the B Pharm, M Pharm, Pharm D students that, the college is organizing the **R Studio software-Biostatistics** training program from 30.07.2018 to 01.06.2019. All the interested students can attend the program.

Principal




PRINCIPAL
Krupanidhi College of Pharmacy
Chikkabellandür, Carmelaram Post,
Varthur Hobli, Bangalore - 560 035



R Studio & EZR, 2018-19

- ❖ R is a free software environment for statistical computing and graphics. It compiles and runs on a wide variety of UNIX platforms, Windows and MacOS.
- ❖ EZR is a graphical user interface for R based on R commander.
- ❖ At Krupanidhi College of Pharmacy, we extensively use EZR and R foundation package for performing statistical analysis of data generated through students' academic projects.

Beneficiaries of the Software:

V & VI Pharm D students undertaking academic projects are the primary beneficiaries of the tool. The software is also used to provide hands on training for IV PharmD students on Biostatistics.

Activities performed using EZR Interface for R:

- ❖ Sample size estimation for pharmaco epidemiologic and clinical interventional studies involving human participants as follows:
 - ✓ Sample size estimation from control and desired response rates.
 - ✓ Sample size estimation from proportion and confidence interval.
 - ✓ Sample size estimation for comparison with specified proportion.
 - ✓ Power calculation for comparison with specified proportion.
 - ✓ Sample size estimation for non-inferiority trial of two proportions.
 - ✓ Sample size estimation from standard deviation and confidence interval.
 - ✓ Sample size and power calculation for comparison between two means.
 - ✓ Sample size and power calculation for comparison and non-inferiority trial of two survival curves and two paired means.
- ❖ Perform the following descriptive summary and inferential statistics involving discrete and continuous variables.
 - ✓ Frequency distributions
 - ✓ Assess data normality using Q-Q plot and Shapiro-Wilk test.
 - ✓ Compute measures of central tendency and dispersion.
 - ✓ Construct relevant graphs and charts for given statistical tests.



PRINCIPAL
Krupanidhi College of Pharmacy
Chikkabellandür, Carmelaram Post,
Varthur Hobli, Bangalore - 560 035



KRUPANIDHI COLLEGE OF PHARMACY

AICTE, PCI, RGUHS approved, NAAC "A" and ISO certified



- ✓ Perform parametric (Unpaired t-test, paired t-test and ANOVA) and non-parametric tests (Mann-Whitney U, Wilcoxon Rank Sum and Kruskal Wallis test) for comparison.
- ✓ Perform Pearson's Product Moment Correlation and Spearman's Ranked Correlation of continuous variables.
- ✓ Perform Chi-square and Fisher's Exact test to associate dichotomous variables.
- ✓ Perform post-hoc analysis of variables involving ordinary and repeated measures: Bonferroni corrections.

Software Utilization in Krupanidhi College of Pharmacy:

Since 2018, EZR has been used extensively in Krupanidhi College of Pharmacy for V year PharmD project statistical analysis purpose:

1. Total students utilized EZR for academic projects : 30
 2. Total students trained in EZR for statistical analysis : 30 (Beginner level proficiency)
-

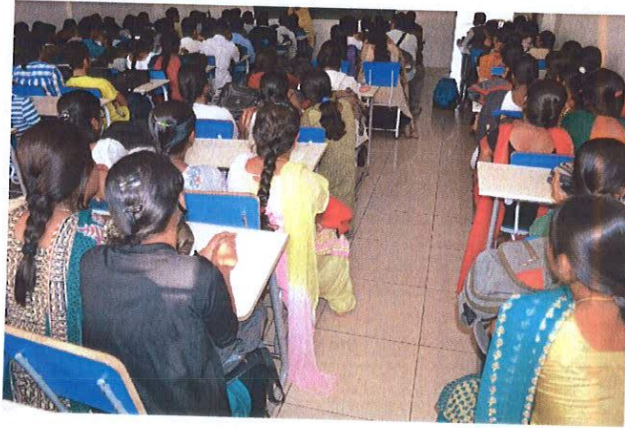
GLIMPE OF THE EVENT



8/10/22
PRINCIPAL
Krupanidhi College of Pharmacy
Chikkabellandur, Carmelaram Post,
Arthur Hobli, Bangalore - 560 035



KRUPANIDHI COLLEGE OF PHARMACY
AICTE, PCI, RGUHS approved, NAAC "A" and ISO certified



Kaul
8/10/22

S
8/10/22

PRINCIPAL
Krupanidhi College of Pharmacy
Bikkabellandūr, Carmelaram Post,
Chur Hobli, **Bangalore - 560 035**



KRUPANIDHI COLLEGE OF PHARMACY

(Approved by AICTE & PCI, New Delhi, Affiliated to RGUHS, Bengaluru)
Accredited with Grade 'A' by NAAC, Bengaluru | ISO 9001 - 2015 Certified
12/1, CHIKKA BELLANDUR, CARMELARAM POST, VARTHUR HOBLI, BANGALORE - 560 035

NAME LIST – R STUDIO (2018-19)

1.	15Q0801	ABIYA VARGHESE
2.	15Q0802	AKASH ASHOK MANVI
3.	15Q0803	ALISA LALBIAKKIMI SAILO
4.	15Q0804	BEHROOZ SAKI TAVANDASHTI
5.	15Q0805	ELMER CLOVER RODRIGUES
6.	15Q0806	FATEMEH ASADI MOBARAKEH
7.	15Q0807	F. LALHMANGAIHZUAI
8.	15Q0808	GOWTHAM S E
9.	15Q0809	KARAN JAIDEEP
10.	15Q0810	KISHOR G S
11.	15Q0811	MADHUSHREE I
12.	15Q0812	MILTON GREGORY VARGHESE
13.	15Q0813	MUNAZZA AFREEN
14.	15Q0814	NANDINI R
15.	15Q0815	NIGIN RAHIMI FARD
16.	15Q0816	NISHANTH S
17.	15Q0817	PRAMITAV DEBNATH
18.	15Q0819	SANDHYA S
19.	15Q0820	SAVITHA M
20.	15Q0821	SHIMA RAHIMIFARD
21.	15Q0823	SHIVANKAR PRADHAN
22.	15Q0822	SHIVAANI M U
23.	15Q0824	SMRITHI S
24.	15Q0825	SOWMYA
25.	15Q0825	SOWMYA N K
26.	15Q0827	SWATHI KIRAN B S
27.	15Q0829	TAMIZH SELVAN E
28.	15Q0828	T A SYED SADATHULLA
29.	15Q0830	ZARZOLIANA
30.	16Q0801	MS. ABHIRAMI EBY
31.	16Q0802	MS. AMRUTHA MOHAN
32.	16Q0803	MS.ARATHI,M
33.	16Q0804	MR. ARCHIT JAIN
34.	16Q0805	MS. BESTEEN RINJU RAJEN
35.	16Q0806	MS.B. DEFRIA ZENETH



PRINCIPAL

Krupanidhi College of Pharmacy
Chikkabellandur, Carmelaram Post,
Varthur Hobli, Bangalore - 560 035



KRUPANIDHI COLLEGE OF PHARMACY


(Approved by AICTE & PCI, New Delhi, Affiliated to RGUHS, Bengaluru)

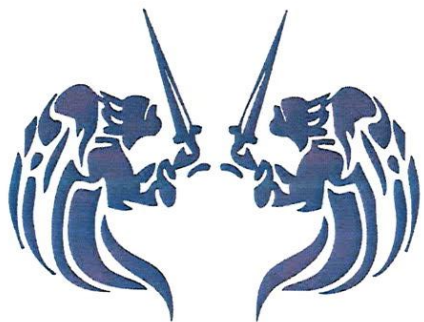
Accredited with Grade 'A' by NAAC, Bengaluru | ISO 9001 - 2015 Certified

12/1, CHIKKA BELLANDUR, CARMELARAM POST, VARTHUR HOBLI, BANGALORE - 560 035

36.	16Q0807	MS. ELEENA BIJO
37.	16Q0808	MS. ELIZABETH JACOB
38.	16Q0809	MS. ELSA JACOB
39.	16Q0810	MR. LANISH WILSON
40.	16Q0811	MR. MAHAMMAD ASIR. M
41.	16Q0812	MAMILLAPALLY LOUKYA
42.	16Q0813	MS. MERLIN MARY SABU
43.	16Q0814	MR. PAVAN.M
44.	16Q0815	MR. PAVAN . N
45.	16Q0816	MS. PHARIDA THUBRU
46.	16Q0817	MR. RAJESHKUMAR DUTTA
47.	16Q0818	MS. SHIJI JOHN
48.	16Q0819	MS. SHYNO ABRAHAM
49.	16Q0820	MR. SIDHARTH
50.	16Q0821	MS. SUBHIKSHA. V
51.	16Q0822	MS.THEERDHA DHAR
52.	16Q0823	MS. THENDRAL. R
53.	16Q0824	MS. TRIVENI . L
54.	16Q0825	SARAH PHILIP PANICKER
55.	16Q0826	Y BEE BE FATHIMA
56.	17Q0813	HEMASRI V
57.	17Q0814	KANIVI JULITTA
58.	17Q0815	KELHOUKHRIENUO SUOKHRIE
59.	17Q0816	LALRINFELI PACHUAU
60.	17Q0817	MEGAN ELITA D SA




PRINCIPAL
Krupanidhi College of Pharmacy
Chikkabellandur, Carmelaram Post,
Varthur Hobli, Bangalore - 560 035



KRUPANIDHI COLLEGE OF PHARMACY

RECOGNISED BY GOVT OF KARNATAKA | APPROVED BY PHARMACY COUNCIL OF INDIA |
AICTE, NEW DELHI AND AFFILIATED TO RAJIV GANDHI UNIVERSITY OF HEALTH SCIENCES
| AN ISO 9001:2015 CERTIFIED INSTITUTION NAAC 'A' GRADE ACCREDITED

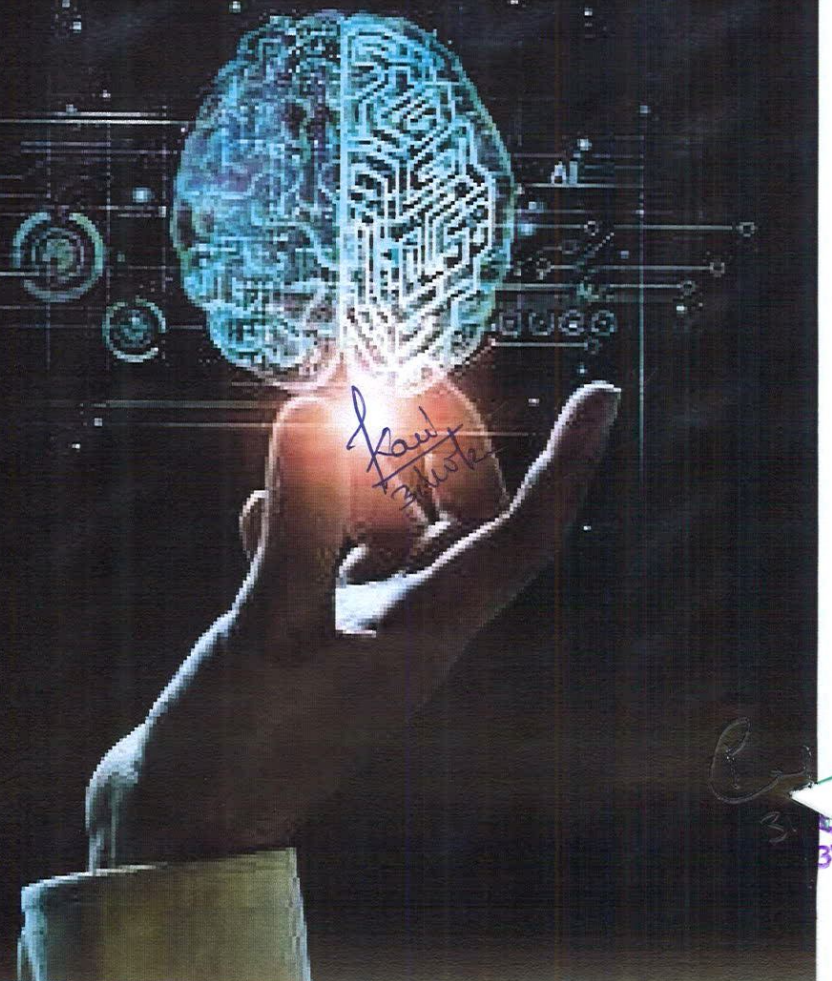
#12/1, CHIKKABELANDHUR, CARMELARAM POST, BANGALORE-560 035

Expharma
series software

30/7/2018

to

1/6/2019





KRUPANIDHI COLLEGE OF PHARMACY
AICTE, PCI, RGUHS approved, NAAC "A" and ISO certified



DATE: 27.07.2018

CIRCULAR

This is to inform all the B Pharm, M Pharm, Pharm D students that, the college is organizing the **Expharma Series software** training program from 30.07.2018 to 01.06.2019. All the interested students can attend the program.

Principal




PRINCIPAL
Krupanidhi College of Pharmacy
Chikkabellandur, Carmelaram Post,
Varthur Hobli, Bangalore - 560 035



SUMMARY ON EXPHARMA SERIES 2018-2019
(EXPERIMENTAL PHARMACOLOGY SERIES)

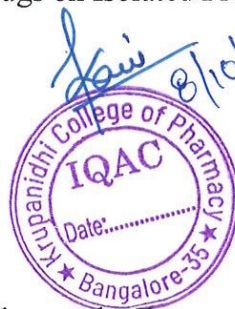
- This is a computer assisted learning package containing various programs which simulate animal experiments in Pharmacology.
- These programs can be used to demonstrate drug on different animal's systems.
- The package is user friendly, highly interactive and full of animated sequences which make simulation appear realistic.

BENEFICIARIES OF THE SOFTWARE:

- ❖ Software is aimed for medical, pharmacy and dental undergraduate students. The software can also be used by the students of paramedical courses such as nursing, medical laboratory technology and physiotherapy etc.
- ❖ IV, V, VI Sem B. Pharm and III PharmD students undergoes the regular practicals by using this software.

ACTIVITIES PERFORMED USING EXPHARMA SOFTWARE:

1. Experiment on effects of various drugs (Mydriatic, Miotic and Local Anaesthetic) on rabbit's eye.
2. (Epinephrine, Atropine, Ephedrine, Physostigmine, Lignocaine)
3. Study of Analgesic activity with the help of "Tail Flick Apparatus" (Analgesiometer).
4. Study of Antihistaminic drugs/Anti allergic drugs by mast cell stabilization method with the help of "Histamine Chamber"
5. Study of Muscle Relaxant activity with the help of "Rota-Rod Apparatus".
6. Study of CNS Depressants & Stimulants Using "Actophotometer".
7. Study of Analgesic activity with the help of "Hot Plate Apparatus" (Analgesiometer).
8. Effect of Different Drugs (Including Saline Purgatives) on Ciliary Motility of Frog Oesophagus.
9. Study of Drugs acting on CNS (Including Anxiolytic Activity) using following modules
 - Elevated Plus Maze Method
 - Pole Climbing Method
10. Study of anticonvulsant activity using "Electro Convulsimeter".
11. Experiment on Effect of various drugs on Isolated Frog's Heart. (DRC- Dose Response Curve)
 - Epinephrine
 - Norepinephrine
 - Isoprenaline
 - Calcium Chloride
 - Propranolol
 - Acetylcholine
 - Potassium chloride
 - Atropine sulphate
12. Experiment on Bioassay of Histamine on the Ileum of Guinea Pig.
13. Simulation of pupil control
 - Simulation of the effects of the physiological stimuli and drugs on the pupillary reflexes.
 - Simulation of the control in patient with partial parasympathetic block.
14. Experiments on Lagendorff's Apparatus
 - Effect of coronary vasodilators on isolated heart
 - Effect of parasympathomimetic.
15. Test for pyrogens using rabbits.
16. Effect of drugs on isolated guinea pig ileum (in-vitro).
17. To Study Respiratory depression effect on rabbit.



S
8/10/22

PRINCIPAL
Krupanidhi College of Pharmacy
Chikaballapur, Bellandur Post,
Chikaballapur, Bangalore - 560 035



KRUPANIDHI COLLEGE OF PHARMACY

AICTE, PCI, RGUHS approved, NAAC "A" and ISO certified



18. Determination of acute irritation of a test substance.
 - Skin irritation (Including edema formation)
 - Eye irritation
19. Experiments on colonic motility in rat in vitro.
20. Experiments on thyroid and antithyroid drugs
 - The effect of thyroxin, TSH, propylthiouracil, on metabolism.
21. Experiments on blood sugar
22. - The effect of insulin (hypoglycaemic activity) and alloxan on blood glucose.
23. Bioassay of Acetylcholine on the isolated rectus abdominis muscle of frog
 - By Matching Method
 - By Interpolation Method
 - By 3 Point Method
 - By 4 Point Method

EXPHARMA SERIES UTILIZATION IN KRUPANIDHI COLLEGE OF PHARMACY

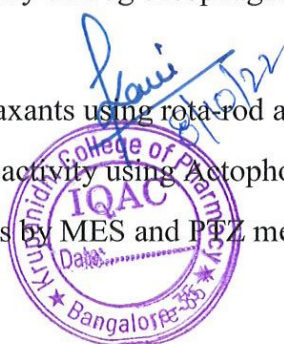
- Since 2018, Ex pharma series has been extensively used in Krupanidhi College of Pharmacy for IV, V, VI Sem B. Pharm and III Pharm D students for learning Simulated experiments in pharmacology.
- Total Number of experiments involving Ex pharma series :23
- Total Number of students used Ex pharma series:
 1. IV Sem B. Pharm – 97 students
 2. V Sem B. Pharm- 97 students
 3. III Pharm D – 30 students.
 4. Total- 224 students.

Syllabus/content of the programme:

B. PHARM IV SEM:

BP 408 P. PHARMACOLOGY-I (Practical) 4Hrs/Week

1. Introduction to experimental pharmacology.
2. Commonly used instruments in experimental pharmacology.
3. Study of common laboratory animals.
4. Maintenance of laboratory animals as per CPCSEA guidelines.
5. Common laboratory techniques. Blood withdrawal, serum and plasma separation, anesthetics and euthanasia used for animal studies.
6. Study of different routes of drugs administration in mice/rats.
7. Study of effect of hepatic microsomal enzyme inducers on the phenobarbitone sleeping time in mice.
8. Effect of drugs on ciliary motility of frog oesophagus
9. Effect of drugs on rabbit eye.
10. Effects of skeletal muscle relaxants using rota-rod apparatus.
11. Effect of drugs on locomotor activity using Actophotometer.
12. Anticonvulsant effect of drugs by MES and PTZ method.



PRINCIPAL
Krupanidhi College of Pharmacy
Chikkabellandur, Carmelaram Post,
Varthur Hobli, Bangalore - 560 035



13. Study of stereotype and anti-catatonic activity of drugs on rats/mice.

14. Study of anxiolytic activity of drugs using rats/mice.

15. Study of local aesthetics by different methods

Note: All laboratory techniques and animal experiments are demonstrated by simulated experiments by softwares and videos

B. PHARM V SEM:

BP 507 P. PHARMACOLOGY-II (Practical) 4Hrs/Week

1. Introduction to in-vitro pharmacology and physiological salt solutions.

2. Effect of drugs on isolated frog heart.

3. Effect of drugs on blood pressure and heart rate of dog.

4. Study of diuretic activity of drugs using rats/mice.

5. DRC of acetylcholine using frog rectus abdominis muscle.

6. Effect of physostigmine and atropine on DRC of acetylcholine using frog rectus abdominis muscle and rat ileum respectively.

7. Bioassay of histamine using guinea pig ileum by matching method.

8. Bioassay of oxytocin using rat uterine horn by interpolation method.

9. Bioassay of serotonin using rat fundus strip by three-point bioassay.

10. Bioassay of acetylcholine using rat ileum/colon by four-point bioassay.

11. Determination of PA₂ value of prazosin using rat anococcygeus muscle (by Schilds plot method).

12. Determination of PD₂ value using guinea pig ileum.

13. Effect of spasmogens and spasmolytics using rabbit jejunum.

14. Anti-inflammatory activity of drugs using carrageenan induced paw-edema model.

15. Analgesic activity of drug using central and peripheral methods

Note: All laboratory techniques and animal experiments are demonstrated by simulated experiments by softwares and videos

III PHARM D PHARMACOLOGY 4hrs/week

1. Study of laboratory animals and their handling (a. Frogs, b. Mice, c. Rats, d. Guinea pigs, e. Rabbits).

2. Study of physiological salt solutions used in experimental pharmacology.

3. Study of laboratory appliances used in experimental pharmacology.

4. Study of use of anesthetics in laboratory animals.

5. To record the dose response curve of Ach using isolated ileum/rectus abdominis muscle preparation.



PRINCIPAL
Krupanidhi College of Pharmacy
Chikkabellandur, Carmelaram Post,
Varthur Hobli, Bangalore - 560 035



6. To carry out bioassay of Ach using isolated ileum/rectus abdominis muscle preparation by interpolation method.
7. To carry out bioassay of Ach using isolated ileum/rectus abdominis muscle preparation by three-point method.
8. To record the dose response curve of Histamine using isolated guinea -pig ileum preparation.
9. Study of agonistic and antagonistic effects of drugs using isolated guinea -pig ileum preparation.
10. To carry out bioassay of Histamine using isolated guinea -pig ileum preparation by interpolation method.
11. To carry out bioassay of Histamine using guinea -pig ileum preparation by three-point method.
12. To study the routes of administration of drugs in animals (Rats, Mice, Rabbits).
13. Study of theory, principle, procedure involved and interpretation of given results for the following experiments: a) Analgesic property of drug using Analgesiometer. b) Anti-inflammatory effect of drugs using rat-paw edema method. c) Anticonvulsant activity of drugs using maximal electroshock and pentylene tetrazole methods. d) Antidepressant activity of drugs using pole climbing apparatus and pentobarbitone induced sleeping time methods. e) Locomotor activity evaluation of drugs using Actophotometer and rotarod. f) Cardiotonic activity of drugs using isolated frog heart and mammalian heart preparations.

***Experiments are demonstrated by simulated experiments/videos.**

NUMBER OF HOURS OF PROGRAMME

1. B. PHARM IV SEM – 4hrs/week
2. B. PHARM V SEM- 4hrs/week
3. PHARMD III YEAR- 4hrs/week

GLIMSE OF THE EVENT



8/10/22
PRINCIPAL
Krupanidhi College of Pharmacy
Chikkabellandūr, Carmelaram Post,
Arthur Hobli, Bangalore - 560 035



KRUPANIDHI COLLEGE OF PHARMACY

AICTE, PCI, RGUHS approved, NAAC "A" and ISO certified



8/10/22
PRINCIPAL
Krupanidhi College of Pharmacy
Chikkabellandur, Carmelaram Post,
Varthur Hobli, Bangalore - 560 035



KRUPANIDHI COLLEGE OF PHARMACY

AICTE, PCI, RGUHS approved, NAAC "A" and ISO certified



[Handwritten Signature]
Date: 8/10/22

IQAC
Krupanidhi College of Pharmacy
Bangalore-560035

[Handwritten Signature]
8/10/22

PRINCIPAL
Krupanidhi College of Pharmacy
Chikkabellandur, Carmelaram Post,
Marthur Hobli, Bangalore - 560 035



KRUPANIDHI COLLEGE OF PHARMACY

AICTE, PCI, RGUHS approved, NAAC "A" and ISO certified



LIST OF STUDENTS:

IV and V SEM B. PHARM:

SLNO	REGISTER NUMBER	NAME OF THE CANDIDATE
1.	17P0751	Agniva Ghosh
2.	17P0752	Aman Pandit
3.	17P0753	Amit Chaudhary
4.	17P0754	Amrutha S
5.	17P0755	Aparna Bhaskar
6.	17P0756	Arnab Manna
7.	17P0757	Bharath J
8.	17P0758	Bibi Tahsin Dusruth
9.	17P0759	Chandanashree G
10.	17P0760	Chethan C
11.	17P0761	D Pouzii Duo
12.	17P0762	Deepam Pradhan
13.	17P0763	Deepika V
14.	17P0764	Deevedna Ghoora
15.	17P0765	Dhiraj Patel
16.	17P0766	Gowthami N
17.	17P0767	Grace Vanlaldintluangi
18.	17P0768	Hanna Saarah Abdoolkader
19.	17P0769	Harshitha P
20.	17P0770	Hrushikesh V
21.	17P0771	Immanuel A
22.	17P0772	JayaLakshmi M
23.	17P0773	Keerthana K
24.	17P0774	Kingsly Dass
25.	17P0775	Komala N
26.	17P0776	Kooshika Devi Udhin
27.	17P0777	Lakshmi S
28.	17P0778	Lalrinliana Sailo
29.	17P0779	Likhitha C
30.	17P0780	M Subam Lall
31.	17P0781	Madhura M Bose
32.	17P0782	Maithili Sinha
33.	17P0783	Malsawmtluangi Sailo
34.	17P0784	Maria Danish Alwin R
35.	17P0785	Mathew Savio
36.	17P0786	Milan Bahadur
37.	17P0787	Mir Mujtava Abbas
38.	17P0788	Mohammad Abbas A
39.	17P0789	Mohammad Ismael fadil Lowdheer
40.	17P0790	Mohammed Afsar K
41.	17P0791	Mohammed Umar Khan
42.	17P0792	Monika K
43.	17P0793	Muhammad Yaseen P Ummar
44.	17P0794	N Rajat
45.	17P0795	Nagarjun V



PRINCIPAL
Krupanidhi College of Pharmacy
Chikkabellandur, Carmelaram Post
Varthur Hobli, Bangalore - 560 03

8/10/22

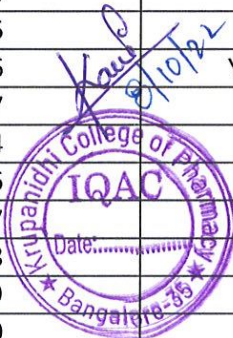


KRUPANIDHI COLLEGE OF PHARMACY

AICTE, PCI, RGUHS approved, NAAC "A" and ISO certified



46.	17P0796	Nandini. L
47.	17P0797	Navya S
48.	17P0798	Navya S
49.	17P0799	Nikilesh R
50.	17P0800	Nimisha Rimal Chhetri
51.	17P0801	Nitthin P
52.	17P0802	Omar Fuad Mahmoud Alhadi
53.	17P0803	Pavan G S
54.	17P0804	Pavithra S
55.	17P0805	Pelden Dema
56.	17P0806	Prathima H N
57.	17P0807	Praveen Kumar S
58.	17P0808	Prethewsh Nadh. S
59.	17P0809	Rachana G
60.	17P0810	Rajkumar M
61.	17P0811	Rajitha M
62.	17P0812	Ravikiran
63.	17P0813	Reena Thapa
64.	17P0814	Roselyne Lalchhandami
65.	17P0815	Rosita Ruth Carlota
66.	17P0816	Ruby Rauniyar Shah
67.	17P0817	S. Gokul
68.	17P0818	Saran P S
69.	17P0819	Sathish A
70.	17P0820	Sathya Murthy A
71.	17P0821	Shekar Reddy P
72.	17P0822	Shreyas K Reddy
73.	17P0823	Sougata Bhunia
74.	17P0824	Srijan Debroy
75.	17P0825	Supratip Laha
76.	17P0826	Syed Faizaan
77.	17P0827	Syed Jari Abbas
78.	17P0828	Syed Mohammed Dayeem
79.	17P0829	Syed Mohasin Abbas
80.	17P0830	Tadjo Fokam Linis Morel
81.	17P0831	Thriveni L
82.	17P0832	Udai Moeen Saeed Bader
83.	17P0833	Vaishalini D
84.	17P0834	Yamini B R
85.	17P0835	Yeshaswini G
86.	17P0836	Yeshta Bhaargavee Domah
87.	17P0837	Zainab Kouser E
88.	18P0544	Harshitha
89.	18P0546	navya S p
90.	18P0547	nishmitha
91.	18P0548	Prathima H N
92.	18P0549	Rachana G
93.	18P0550	Rajkumar M
94.	18P0551	kimi



PRINCIPAL
Krupanidhi College of Pharmacy
Chikballandur, Carmelaram Post,
Vartalur Hobli, Bangalore - 560 035



KRUPANIDHI COLLEGE OF PHARMACY
AICTE, PCI, RGUHS approved, NAAC "A" and ISO certified



95.	18P0552	nethravathi
96.	18P0553	chandana
97.	18P0545	Hafeezulla

III PHARM D:

SL NO	REGISTER NUMBER	NAME OF THE CANDIDATE
98.	16Q0800	Arti M
99.	16Q0801	Abhirami Eby
100.	16Q0802	Amrutha Mohan Nair
101.	16Q0803	Archit Jain
102.	16Q0804	Besteen Rinju rajen
103.	16Q0805	Defria Zeneth B
104.	16Q0806	Eleena Bijo
105.	16Q0807	Elizebeth jacob
106.	16Q0808	Elsa Jacob
107.	16Q0809	Lanish Wilson
108.	16Q0810	Mohammed Asir M
109.	16Q0811	Mamillapally Loukya
110.	16Q0812	Merlin Mary Sabu
111.	16Q0813	Pavan M
112.	16Q0814	Pavan N
113.	16Q0815	Pharida Thubru
114.	16Q0816	Rajesh Kumar Dutta
115.	16Q0817	Shiji John
116.	16Q0818	Shyno Abraham
117.	16Q0819	Sidharth
118.	16Q0820	Subhiksha V
119.	16Q0821	Theerdha Dhar
120.	16Q0822	Thendral R
121.	16Q0823	Triveni L



S
8/10/22

PRINCIPAL
Krupanidhi College of Pharmacy
Chikkabellandur, Carmelaram Post,
Varthur Hobli, Bangalore - 560 035